

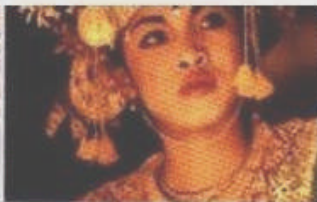
 **migrant-friendly hospitals**

Bradford Teaching Hospitals 
An NHS Foundation Trust



**Developing Culturally Competence:
From Policy to Practice**

Dilshad Khan
Director of Equality and Diversity



"O Mankind! We have created you from a male and female, and made you into nations and tribes, that you may know one another



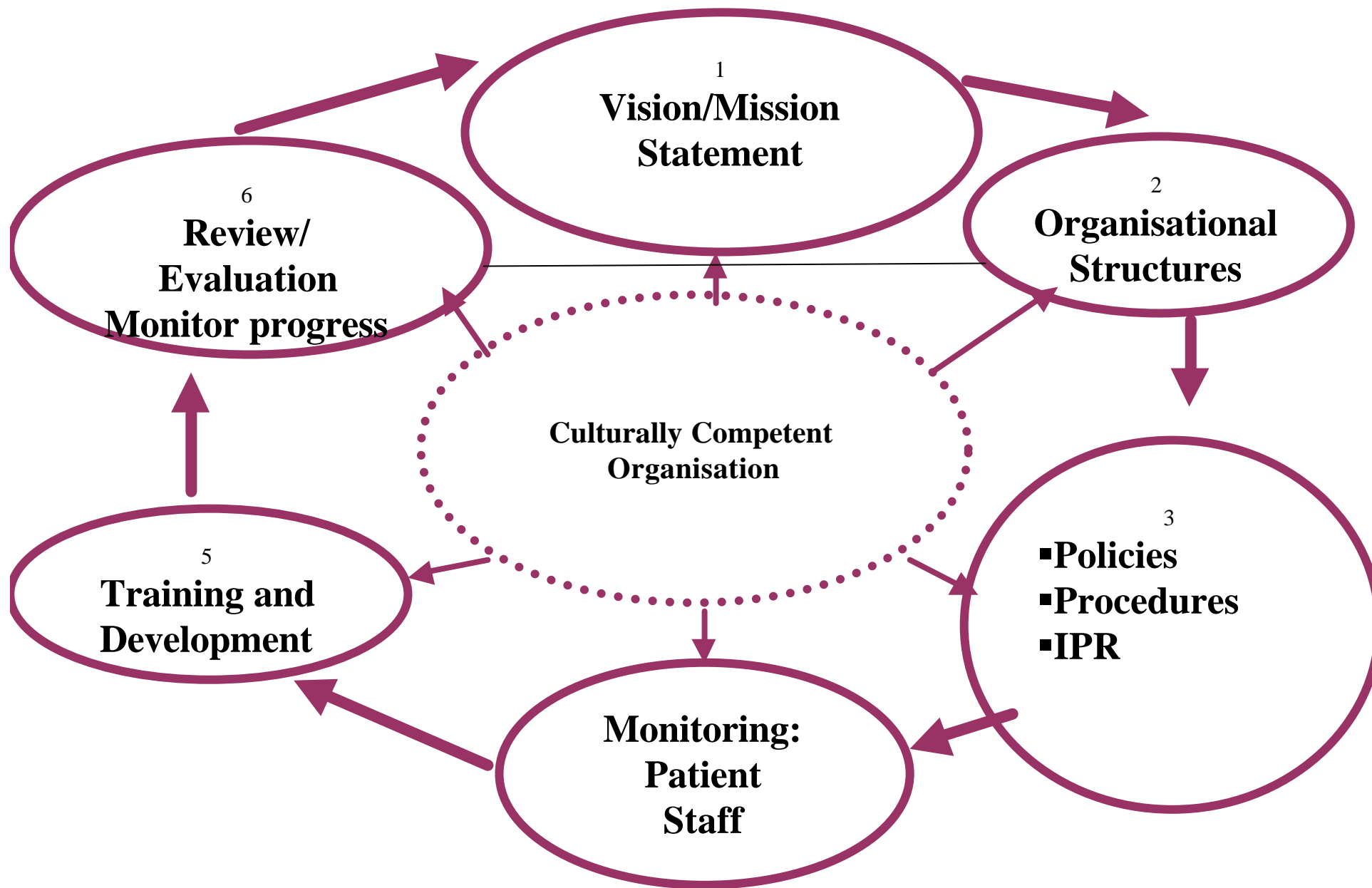
(Qur'an 49:13)





CULTURAL COMPETENCE

Cultural competence is the ability to provide effective health care services, taking into consideration the individual's gender, sexuality, disability, age, religious, spiritual and cultural beliefs.





migrant-friendly hospitals

Creating Organisational Platform for Equality

EQUALITY STEERING COMMITTEE



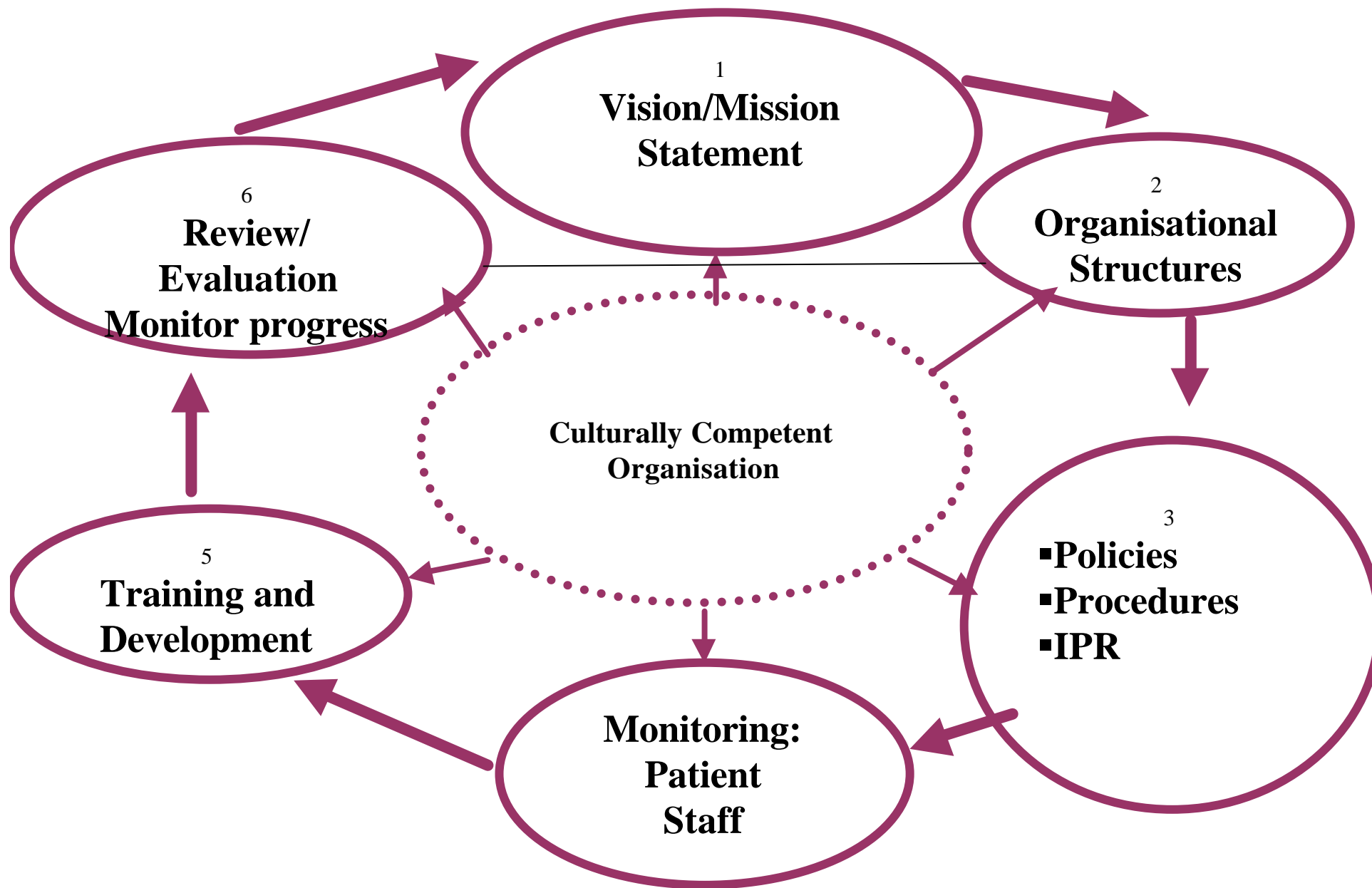
EQUALITY & DIVERSITY ADVISORY GROUP



EQUALITY AND DIVERSITY FORUMS:

- Disability Steering Group
- Communication with Patients Group
- PALS/Patient and Public Involvement
- Nursing and Midwifery Cultural Group
- Departmental Equality and Diversity Focus Groups
- Clinical Governance Monitoring Group
- Improving Working Lives Group
- ETC ETC

Department of Equality and Diversity





migrant-friendly hospitals

Bradford Teaching Hospitals 
An NHS Foundation Trust

Dilshad Khan

Director of Equality and Diversity

Bradford Teaching Hospitals NHS Foundation Trust

BRI Hospital

Duckworth Lane

Bradford BD9 6RJ

Tel: 00 44 1274 364389

Mobile: 00 44 7973 407 104

Email: dilshad.khan@bradfordhospitals.nhs.uk